



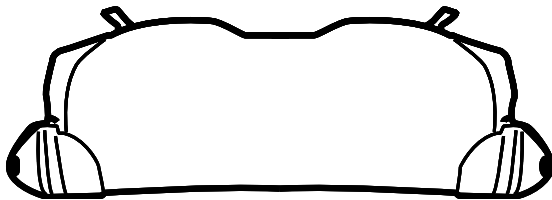
# GENUINE PARTS

## INSTALLATION INSTRUCTIONS

<b>DESCRIPTION:</b>	Tonneau Cover
<b>APPLICATION:</b>	JUKE (2011)
<b>PART NUMBER:</b>	Tonneau Cover (G9911 1KM0A)

### KIT CONTENTS:

Item	Qty.	Part Description	Service Part Number
A	1	Tonneau Cover ASSY	---
B	1	Installation Instructions Replacement Template	---



A



B

### TOOLS REQUIRED:

- Clip clamp tool
- Center Punch
- Drill
- 3mm (1/8") and 8mm (5/16") Drill Bit

### PRE-INSTALLATION WARNINGS, CAUTIONS, CRITICAL STEPS, and NOTES:

- Dealer Installation Recommended. Instructions may refer to Service Manual.

### CAUTION

- Do not put anything on the frame or cover of the tonneau cover.
- Do not apply undue force to this product when installing it.
- Be careful not to scratch this product and vehicle parts during installation

### NOTE:

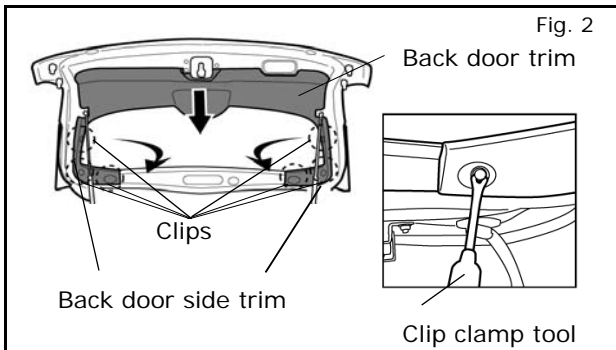
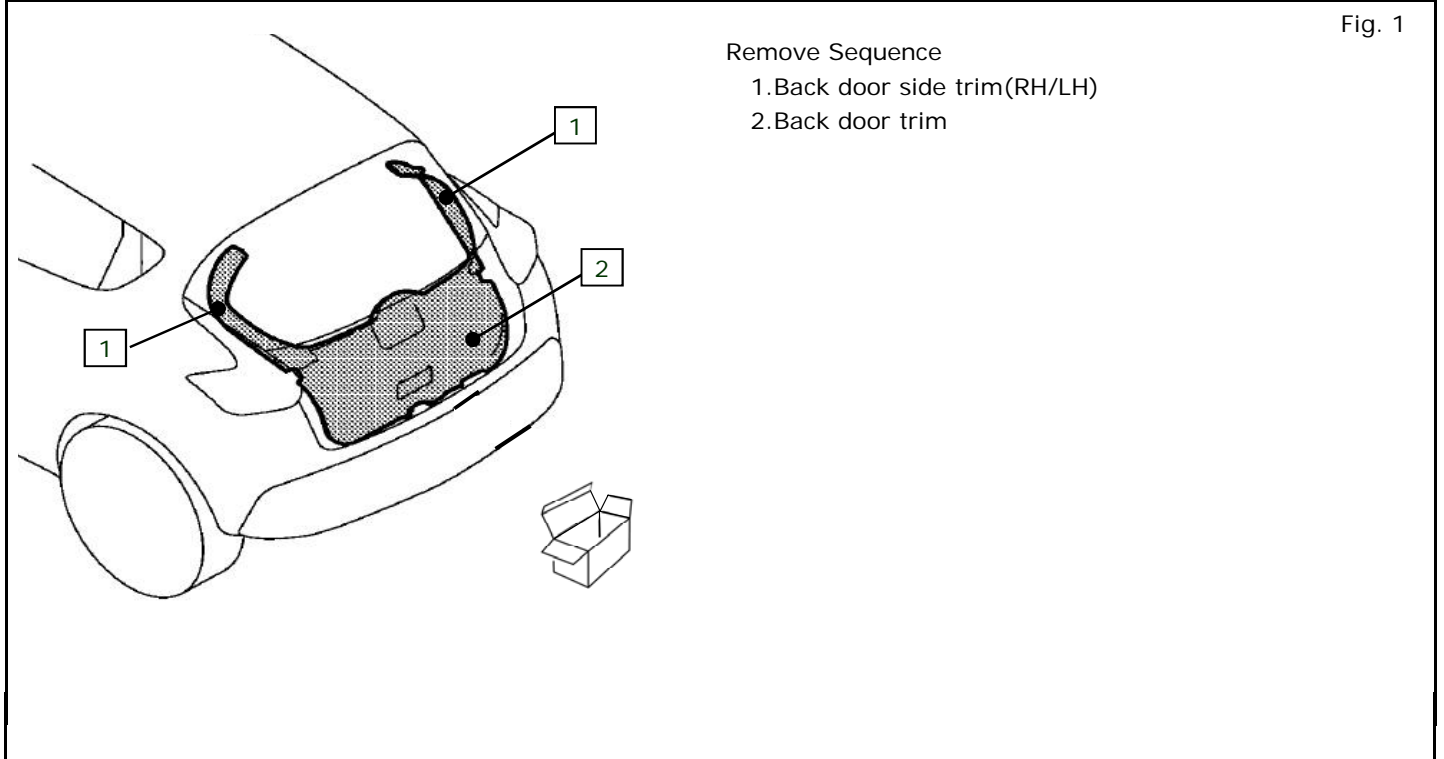
There instructions are for the right side of the vehicle,the same procedure applies to the left side.

## INSTALLATION PROCEDURE:

### ⚠ CAUTION

- Take care not to scratch or damage any component during the removal or re-installation process.
- Be careful not to scratch anything when taking off the clips.

1) Remove the following vehicle parts in the sequence shown below.

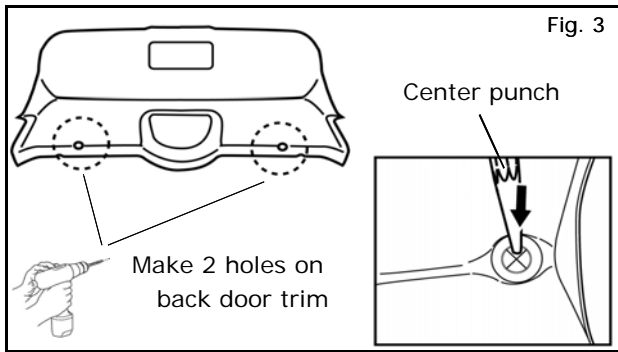


- a) Open Back door, and remove Back door trim.
- b) Remove of 3 clips on Back door side trim using clip clamp tool.

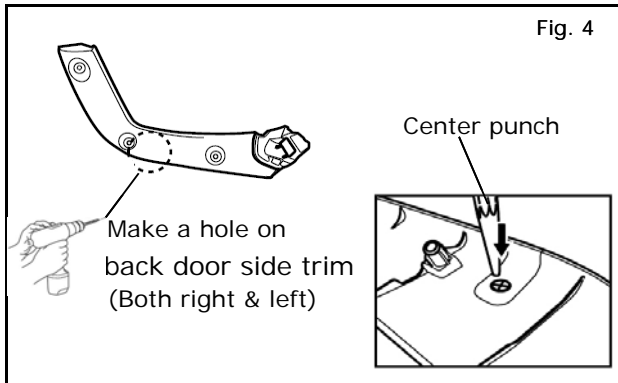
#### NOTE:

**Be careful not to lose the clips as they will be used again.**

## INSTALLATION PROCEDURE:



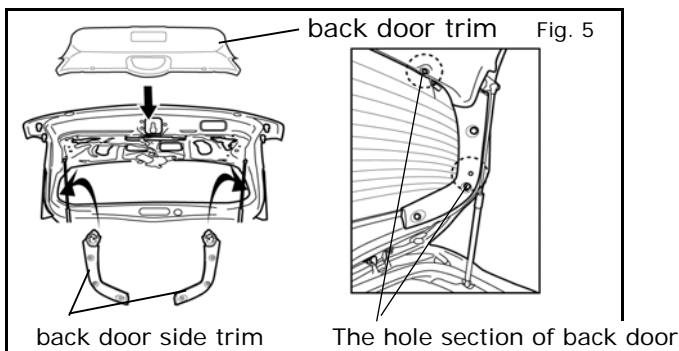
- 2) Hole preparation to Back door trim and Back door side trim.
- a) Form 2 dimples by pushing center punch at the center of "X" mark on the back side of back door trim. Then drill holes (pilot hole diam. 3mm(1/8") hole diam. 8 mm(5/16")) on where the dimples are.



- b) Form a dimple by pushing center punch at the center of "X" mark on the back side of back door side trim. Then drill holes (pilot hole diam. 3mm(1/8") hole diam. 8 mm(5/16")) on where the dimples are.

## ⚠ CAUTION

- Drill holes at the center of "X" mark.

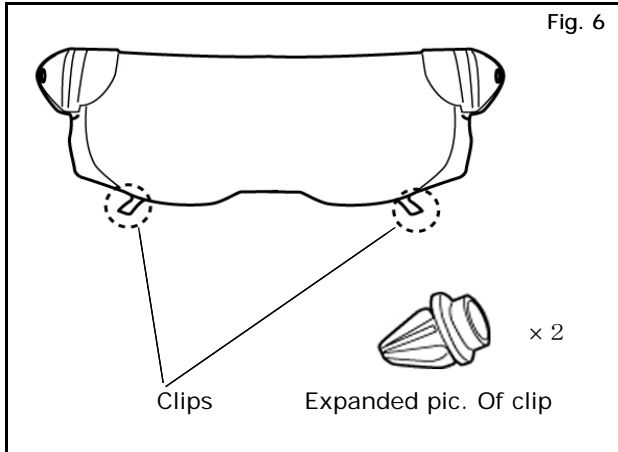


- c) Reinstall back door trim back to the place where it was. Reinstall right&left back door side trim back to the place where it was.

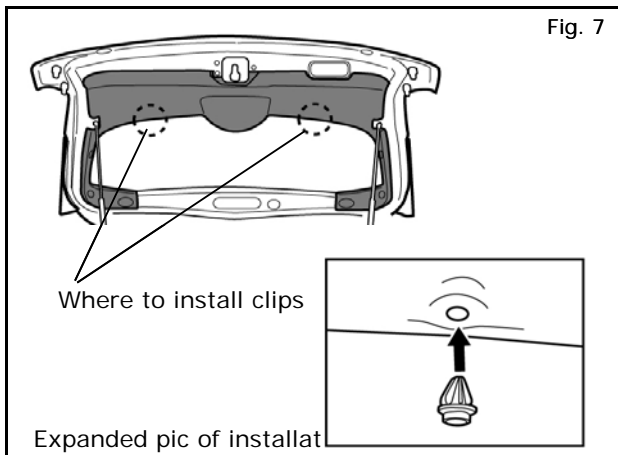
## ⚠ CAUTION

- Be careful not to scratch anything when installing back

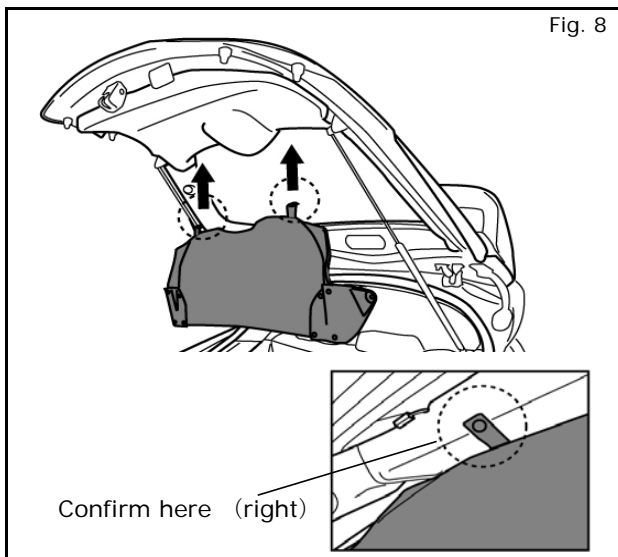
## INSTALLATION PROCEDURE:



- 3) Installation of Tonneau cover ASSY  
a) Remove 2 clips from Tonneau cover assy.



- b) Install 2 clips to back door trim.

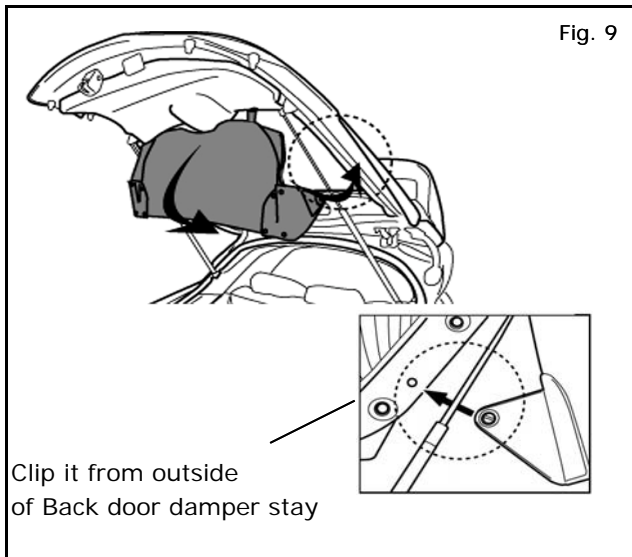


- c) Install Tonneau cover assy to the clips attached in previous procedure.

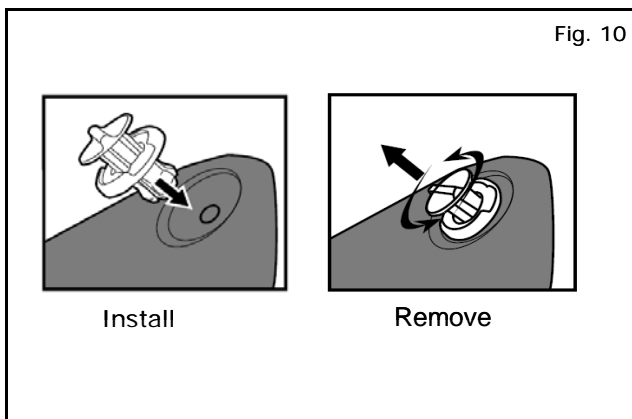
### CAUTION

- Confirm if Tonneau cover assy is correctly attached to the clips.

**INSTALLATION PROCEDURE:**



- d) Install Tonneau cover assy to back door side trim using the clips on both ends.



- 4) Removal of Tonneau cover assy from back door trim.  
a) When you remove tonneau cover, rotate and remove the clip.

**ACCESSORY CHECK:**

- Check all Critical Installation Steps.

**RE-INSTALLATION OF REMOVED PARTS:**

- Re-install all removed vehicle parts. Refer to the vehicle service manual for more details.



**CAUTION**

**Use caution when re-installing interior components to avoid damage, scratches, or breaking of mounting clips. Refer to the vehicle service manual for more information.**

**FINAL INSPECTION:**

- Verify re-installed trim parts for proper flush fit (no gap, no waviness, etc.).
- Verify all clips are fully engaged and locked.
- Verify re-installed trim parts are free from cracks, scratches or stress marks.
- Verify vehicle headliner, seat, steering wheel, center console, floor carpets, etc. are not soiled.
- Verify interior and exterior is not damaged.